



# Parcel Service Guide

PV7.4.0 SV100

Copyright © 2025 OneStream Software LLC. All rights reserved.

Any warranty with respect to the software or its functionality will be expressly given in the Subscription License Agreement or Software License and Services Agreement between OneStream and the warrantee. This document does not itself constitute a representation or warranty with respect to the software or any related matter.

OneStream Software, OneStream, Extensible Dimensionality, and the OneStream logo are trademarks of OneStream Software LLC in the United States and other countries. Microsoft, Microsoft Azure, Microsoft Office, Windows, Windows Server, Excel, Internet Information Services, Windows Communication Foundation and SQL Server are registered trademarks or trademarks of Microsoft Corporation in the United States and/or other countries. DevExpress is a registered trademark of Developer Express, Inc. Cisco is a registered trademark of Cisco Systems, Inc. Intel is a trademark of Intel Corporation. AMD64 is a trademark of Advanced Micro Devices, Inc. Other names may be trademarks of their respective owners.

# Table of Contents

Overview .....	1
Setup and Installation .....	2
Dependencies .....	2
Select the Parcel Service Development Location .....	3
Create the OneStream Development Application .....	3
Configure Application Server Settings .....	4
Install Parcel Service .....	5
Set Up OPS .....	6
Create Tables .....	6
Package Contents .....	7
Data Management .....	9
Specify Settings .....	10
Specify Global Options .....	10
Security Role [Manage Parcel Service] .....	12

## Table of Contents

---

Security Role [Manage Packages Group] .....	12
Security Role [Manage Distributions Group] .....	12
Email Connection .....	12
Default Email Title .....	13
Default Email Message .....	13
Concurrent Email Threads .....	14
Parameter Discovery Nesting .....	14
Create Fileshare Folder Path .....	14
Test Mode (True/False) .....	14
Uninstall .....	15
Ship Items on the Home Page .....	16
Packages .....	18
Create a Package .....	18
Package Contents .....	20
Supplied Parameters - Package Level .....	21
Supplied Parameters – Content Level .....	22

Use Discover .....	22
Package Groups .....	24
Create a Package Group Definition .....	24
Packages – Package Group Level .....	25
Supplied Parameters – Package Group Level .....	25
Manage Distribution Lists .....	26
Distribution List - Users .....	26
Distribution List - Groups .....	28
Distribution List - Members .....	28
Help and Miscellaneous Information .....	29
Display Settings .....	29
Package Contents and Naming Conventions .....	29
GetAllLiteralParams .....	30
Solution Database Migration Advice .....	30
OneStream Solution Modification Considerations .....	31

**Table of Contents**

---

Appendix 1: Encrypt Connection Information ..... 32

Appendix 2: Create a Task With Task Scheduler ..... 35

# Overview

Parcel Service is a OneStream Solution and part of the extensible document framework. Parcel Service provides book and document distribution capabilities, enabling you to create document packages or package groups to deliver - by email or using a fileshare-given predefined distribution settings. You can ship these packages and package groups from the solution home page or on a scheduled basis using the OneStream Task Scheduler. See *Task Scheduler* in the *Design and Reference Guide*.

# Setup and Installation

The following sections contain important information about planning, installing and configuring the solution. Before you install Parcel Service, review these sections:

- [Dependencies](#)
- [Select the Development Location](#)
- [Create the Development Application](#)
- [Configure the Application Server](#)
- [Install Parcel Service](#)

## Dependencies

Note these dependencies:

Component	Description
OneStream 7.4.0 or later	Minimum OneStream Platform version required to install this version of Parcel Service.
OneStream App for Windows	Parcel Service is optimized for the OneStream Application for Windows which has all the functionality as the browser-based version of OneStream.
Microsoft SQL Server 2012  or later	Parcel Service requires an instance of Microsoft SQL Server 2012 or later.



# Select the Parcel Service Development Location

Before installation, decide whether to build the solution directly in the Production OneStream application or in a separate Development OneStream application. This section provides some key considerations for each option.

**Production OneStream Application:** The primary advantage of building the solution in a Production application is that you will not have to migrate the resulting work from a Development application. However, there are intrinsic risks when making design changes to an application used in a Production capacity and it is not advised.

**NOTE:** OneStream strongly recommends that you implement the solution in the Development environment with a fresh copy of the Production application before starting work.

**Development OneStream Application:** As a best practice, use the Development OneStream application to build the solution.

## Create the OneStream Development Application

1. Ensure that all the artifacts relating to Parcel Service, such as **Workflow Profiles** and **Entities**, are in the Production application.
2. Copy your Production OneStream application to your Development environment and rename it. Use this Development version for your Parcel Service project.

# Configure Application Server Settings

You may need to edit the OneStream Application Server Configuration so users can create and change data in the additional database tables. If other OneStream Solutions (such as Specialty Planning) are already in the application, these adjustments may already exist.

Be sure that the security group settings include the users who work on and set up the solution before proceeding.

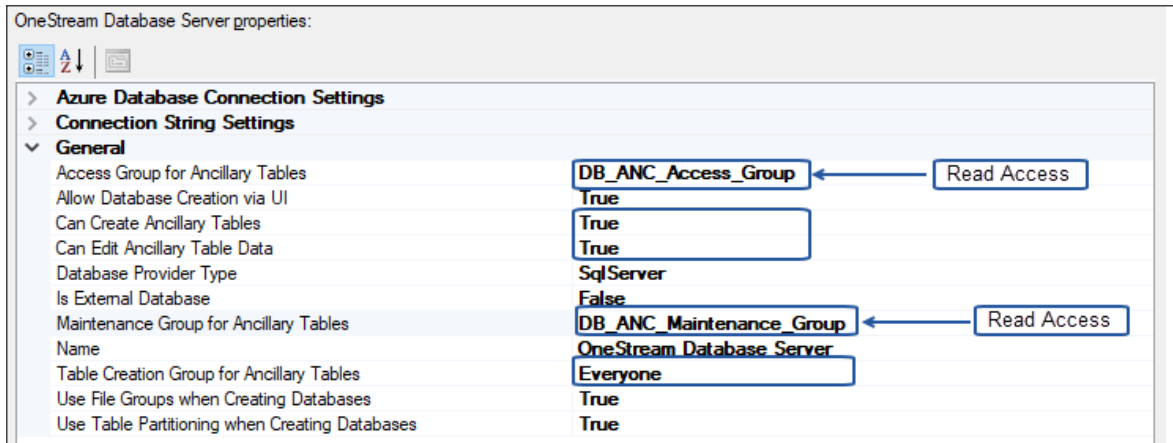
**NOTE:** Group settings are applicable to all OneStream Solutions; it is important to keep the group names generic.

1. Start the OneStream Server Configuration Utility as an Administrator.
2. Click **Open Application Server Configuration File > Database**.
3. Edit the following **OneStream Database Server properties**:
  - **Access Group for Ancillary Tables**: Select a group that includes those who will access records.
  - **Can Create Ancillary Tables**: True
  - **Can Edit Ancillary Table Data**: True
  - **Maintenance Group for Ancillary Tables**: Select a group to edit and maintain tables.
  - **Table Creation Group for Ancillary Tables**: Select a group who can create

## Setup and Installation

---

tables.



4. Restart Internet Information Server.

## Install Parcel Service

1. In the OneStream Solution Exchange, go to OneStream Solutions and select the **Parcel Service** tile.



2. On the Parcel Service solution page, select the appropriate OneStream platform version from **Minimum Platform Version**.
3. Select the most recent version from **Solution Version** and then click **Download**.
4. Log in to OneStream.
5. Click **Application > Tools > Load/Extract**.

## Setup and Installation

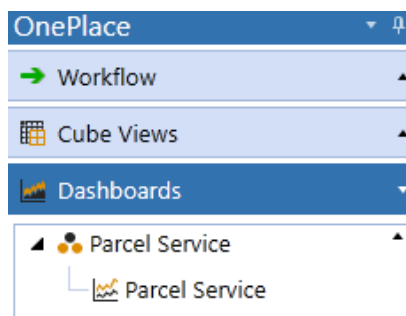
---

6. On the **Load** tab, locate the solution package using the **Select File** icons and click **Open**.
7. When the solution's file name appears, click **Load**.
8. Click **Close**.

## Set Up OPS

The first time you run OPS, a guided table setup process begins.

In OneStream, click **Community Solution > Dashboards > Parcel Service > Parcel Service**.



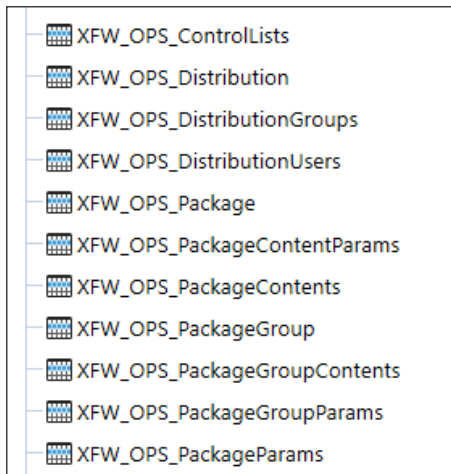
## Create Tables

1. Click **Step 1: Create Tables**

This step may be necessary when upgrading even if tables are already present. Parcel Service will not drop any tables that already exist but will modify table structures and add any new ones if necessary.

## Setup and Installation

---



2. When setup is complete, click **Step 2: Launch Solution** to open Parcel Service.

## Package Contents

The Dashboard Maintenance unit provides the user interface for Parcel Service and includes the required dashboard groups, components, data adapters, parameters and files.

The following business rules are included:

### **OPS\_HelperQueries**

This is a dashboard dataset business rule that provides functions for data query operations from dashboard components and data adapter components.

### **OPS\_SolutionHelper**

This is a dashboard extender business rule that provides various helper functions for the Parcel Service solution. These helper functions include management of the solution setup, configuration settings, and management.

### **OPS\_ParamHelper**

## Setup and Installation

---

This is a conditional parameter helper functions XFBR string business rule. This rule provides conditional parameter processing functions that allow a parameter value to be interpreted and substituted with a different string.

### **OPS\_ShipPackageUsingID**

This is an extensibility business rule used to execute the Parcel Service package shipping routine as a background data management job where the package is referenced by ID.

### **OPS\_ShipPackageGroupUsingID**

This is an extensibility business rule used to execute the Parcel Service group package shipping routine as a background data management job where the group package is referenced by ID.

### **OPS\_ShipPackageUsingName**

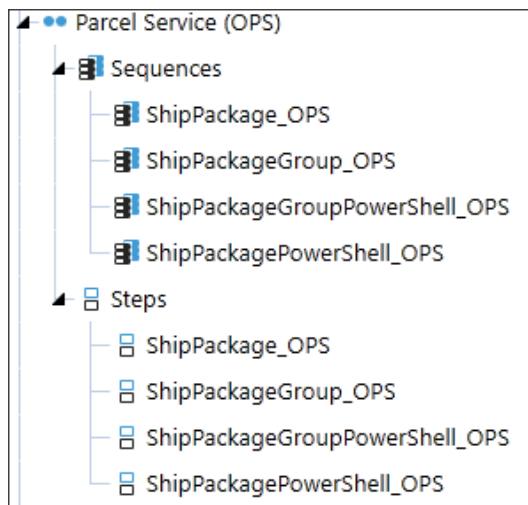
This is an extensibility business rule used to execute the Parcel Service package shipping routine as a background data management job where the package is referenced by name.

### **OPS\_ShipPackageGroupUsingName**

This is an extensibility business rule used to execute the Parcel Service group package shipping routine as a background data management job where the package is referenced by name.

## Data Management

The data management sequences and steps shown in the following image are used with their related business rules, as described above. Run these processes in the background as data management sequences while you continue to work.



# Specify Settings

The **Settings** page contains the **Global Options** tab in where you define key properties that guide administration. The page also contains the **Uninstall** tab that provides uninstall options.

## Specify Global Options

The Global Options page contains key properties that define global Parcel Service administration and initial setup and configuration.

**NOTE:** All global option settings are retained during an upgrade.



# Specify Settings

PARCEL SERVICE

SETTINGS

Global Options

Uninstall

Security Role [Manage Parcel Service]:

Administrators

Security Role [Manage Packages Group]:

Manage Package Group

Security Role [Manage Distributions Group]:

Manage Distribution Group

Email Connection:

OneStreamEmail

Default Email Title:

OneStream Reporting Package

Default Email Message:

This message contains a OneStream Reporting Package for your review.

Concurrent Email Threads:

2

Parameter Discovery Nesting:

5

Create Fileshare Folder Path:

☐

Save

### Security Role [Manage Parcel Service]

Anyone with this role is considered a super user and can configure any aspect of the Parcel Service solution. By default, only the OneStream Administrator or someone in the Administrators user group can change these settings.

### Security Role [Manage Packages Group]

Members of this access group can access, copy, create, modify and ship Public packages and package groups.

### Security Role [Manage Distributions Group]

Members of this access group can access, copy, create and modify Public distribution lists.

## Email Connection

Select an email connection from the dropdown list. Email connections are configured in the OneStream Application Server configuration. Email connections contain all the necessary setup information for the local email provider, including the sending email address, server credentials, host, port, and other data. The email connections list is pulled from the Database Server Connections list in the Application Server configuration.

For more details on email database connections, see the *OneStream Installation and Configuration Guide*.

**See also:** [Appendix 1](#) at the end of this guide for information on setting up OneStream encrypted email connections.

### **Default Email Title**

The email title included in all distributions if a title is not assigned to the distribution.

### **Default Email Message**

The email message included in all distributions if a message is not assigned to the distribution.

### Concurrent Email Threads

The maximum number of email threads to run concurrently. This number is set by the OneStream Administrator and depends on the capabilities of your email provider. The default is 2.

### Parameter Discovery Nesting

This controls how many times the Parameter Discovery process loops through extensible document content looking for parameters.

### Create Fileshare Folder Path

This setting allows Parcel Service to create folders if a folder does not exist upon saving when specified in the **FileShare Folder Path** field.

**NOTE:** Substitution variables can also be used to define file paths.

### Test Mode (True/False)

Test mode allows users to test package delivery without the package being sent to the distribution list. If set to True, the package is run and logged in the Error Log rather than sending an email.

**NOTE:** If users have access to maintain packages and distribution lists, they must be included in the access group for Ancillary Tables (application server setup screen).

# Uninstall


You can uninstall the user interface or the entire solution. If part of an upgrade, changes to standard Parcel Service objects are removed.

**CAUTION:** Uninstall procedures are irreversible.

There are two uninstall options:

1. **Uninstall UI** removes Parcel Service, including related dashboards and business rules but leaves the database and related tables in place. For some releases, this step should be performed before accepting any new version of Parcel Service because some of the dashboards or other objects may have been modified.
  - Choose this option to accept a Parcel Service update without removing the data tables.
  - The Parcel Service Release Notes indicate if an overinstall is supported.
2. **Uninstall Full** removes all the related data tables, all data, Parcel Service dashboards, and business rules. Choose this option to completely remove Parcel Service or to perform an upgrade that is so significant in its changes to the data tables that this method is required. Only business rules deployed on Parcel Service during setup and installation are removed.

# Ship Items on the Home Page

 Use the **Parcel Service** home page to ship packages. You can ship private or public packages or package groups.

Perform these steps to ship an item:

1. Select the parcel type.

1

Select Parcel Type

☒ Package ☐ Package Group

2. Select the package or package group.

2

Select Package

Packages

Controllers

## Ship Items on the Home Page

3. Review the package contents.

3

Review Package - FEB

4

Ship Package

**Delivery Type:** Send One Email to All Recipients

**Email Title:** OneStream Reporting Package (FEB)

**Email Message:** This message contains a OneStream Reporting Package for your review.

Package Contents:

Source File	Delivered File
Documents/Public/XF Docs/Books/IS.xfDoc.pdfBook	IS.pdf
Documents/Public/XF Docs/Books/KeyDataAndVarianceAnalysis.xfDoc.pdfBook	KeyDataAndVarianceAnalysis.pdf
Documents/Public/XF Docs/Books/MarginAnalysis.xfDoc.pdfBook	MarginAnalysis.pdf
Documents/Public/XF Docs/Documents/ExternalReporting_10Q.XFDoc.docx	ExternalReporting_10Q.docx
Documents/Public/XF Docs/Documents/MonthlyOperationalReview.XFDoc.pptx	MonthlyOperationalReview.pptx
Documents/Public/XF Docs/Documents/SummaryBalanceSheet.XFDoc.xlsx	SummaryBalanceSheet.xlsx
Documents/Public/XF Docs/Documents/SummaryIncomeStatement.XFDoc.xlsx	SummaryIncomeStatement.xlsx
Documents/Public/XF Docs/Documents/SummaryIncomeStatement.XFDoc.xlsx	SummaryIncomeStatement (1).xlsx

Ship To:

User	Email

4. Ship the package or package group.

4

Ship Package

Shipment starts as a background process you can monitor using the Task Activity log.

# Packages

A package or package group is a list of associated extensible documents or extensible document books. You can assign a distribution list to each package that identifies to whom the package will ship. Users with permission to manage packages and package groups can create packages or groups and specify parameters for package details and contents. Packages or package groups can be copied or shipped from the **Manage Packages** page.

See:

- [Create a Package](#)
- [Package Contents](#)
- [Supplied Parameters - Package Level](#)
- [Supplied Parameters – Content Level](#)
- [Use Discover](#)

## Create a Package

To create a package, click  to add a row in the **Package Details** grid.



## Packages

---

MANAGE PACKAGES

Packages

Package Groups

### Delivery Type

- **Mail (One Email):** Sends the files in the package to all members in the assigned distribution list. The recipients receive a group email (all recipients are listed in the **To** field).
- **Mail (Individual Emails):** Sends the files in the package to all members in the assigned distribution list. Each recipient receives an individual email (only one recipient listed in the **To** field).
- **Copy Fileshare (Notification Email):** Copies the files in the package to the file share and sends an email to all recipients in the distribution list.
- **Copy Fileshare (No Email):** Copies the files in the package to the file share without sending a notification.

**Distribution:** Name of the distribution list defining the recipients of the selected package.

**Public (True/False):** Controls the availability of the package. If selected, the package is available to all users on the Parcel Service home page and can be managed by users assigned to the Manage Packages Group security role. If cleared, the package is only available to the user who created the package and the OneStream or Parcel Service Administrators.

**Zip Email (True/False):** When selected, this delivers the package contents in a .zip file.

## Packages

**NOTE:** Zip email is ignored when the Delivery Type is set to either **Copy to FileShare (Notification Email)** or **Copy to FileShare (No Email)**.

**Email Title:** Defines a unique email title in place of the default email title from the Settings page. Use parameters in the Email Title field (for example, Audit |WFTIME|) to provide conditional parameter processing. If this value is blank, the default email title from the Settings page is used.

**Email Message:** Defines a unique email message in place of the default email message from the Settings page. Use parameters in the Email Message field (for example, Audit > WFTIME|) to provide conditional parameter processing. If this value is blank, the default email message from the Settings page is used.

MANAGE PACKAGES

Packages

Package Groups

</

**Created By:** Displays the user's name that created the package. This column is only displayed for OneStream and Parcel Service Administrators.

**Date Created:** Displays the date and time the package was created. This column is only displayed for OneStream and Parcel Service Administrators.

## Package Contents

The Contents section lists the extensible documents and books included in the package.

## Packages

---

Controllers - Contents				
XFDoc File Path	Output Filename	Fileshare Folder Path	Access Group	Enabled
[Public] Documents/Public/XF Docs/Books/MarginAnalys			Everyone	<input checked="" type="checkbox"/>

**XFDoc File Path** (Required): Displays the file path where the extensible document files are stored.

**Output Filename:** Enter a filename to be assigned to the package content file. A file extension is not needed because the file inherits the extension from the extensible document file path. If left blank the original filename is used.

**Fileshare Folder Path:** Network file path location where the package content file needs to be saved. (Optional, only required for **Copy Fileshare** delivery types.)

**Access Group:** Filters the package contents and ships it based on the selected access group. If the user sending the package is not in the specified access group for one of the package's content items, then that item will not be included in the package.

**Enabled (True/False):** Controls whether a content item is enabled within the package. Select to include the Extensible Document in the package. Clear to exclude it from the package.

## Supplied Parameters - Package Level

Each extensible document may have parameters that prompt you when you run a file. When you run a Parcel Service package there is no prompt, so you must specify parameters beforehand. Package parameters apply to an entire package. To apply a specific parameter setting to a package, select the parameter and enter a literal value. This literal value applies to all files in the package. This type of parameter does not have to be used, but it is available for convenience and reduces parameter maintenance.

**Name:** Select a Parameter name from the drop-down list.

## Packages

---

**NOTE:** This list contains all dashboard parameters in the current application.

**Literal Value:** Enter the literal value to use for the named parameter.

## Supplied Parameters – Content Level

Each extensible document may have parameters that would normally prompt you when you run the file. When running a Parcel Service package, there is no prompt, so specify parameters beforehand. Content parameters are required and used in the selected extensible document content file. This list of parameters defines the values that must be provided to the content file for the file to be executed without user input. Add these values manually or automatically determine the values by clicking **Discover**.

Supplied Parameters - Acct Recs 2018Q1		
Name	Literal Value	
GetCellScenarioVar	BudgetV1	

**Name:** Enter the name of the parameter.

**Literal Value:** Literal value to use for the named parameter.

**NOTE:** Literal value definitions cannot contain pipes and exclamation marks because they cause unsupported user prompts during the shipping process. Literal values can contain a |substitution variable| (pipes) definition because these values are defined without prompting users.

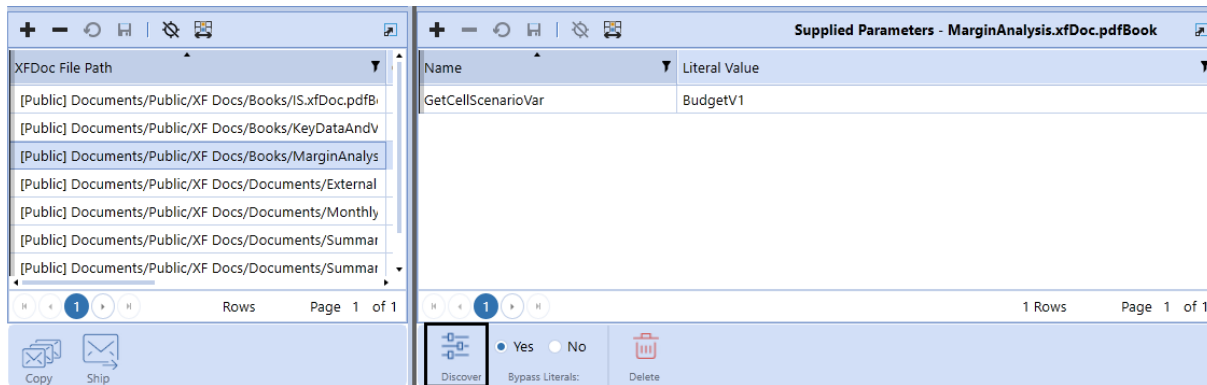
## Use Discover

**Discover:** Select a package's content file and click **Discover** to find any parameters requiring a default value. These parameters display in the supplied parameters grid so

## Packages

users can assign a literal value.

**NOTE:** Parameter discovery uses a recursive algorithm to discover nested parameters (parameters in parameters). By default, this is performed ten times, but you can change this by modifying the **Parameter Discovery Nesting** option in the Setup page.



**Bypass Literal (Yes/No):** Select to bypass all literal parameters when using the Discover feature.

**NOTE:** All changes made to parameter values during the shipping process do not change the actual value of the Dashboard parameter or the original extensible document or book.

# Package Groups

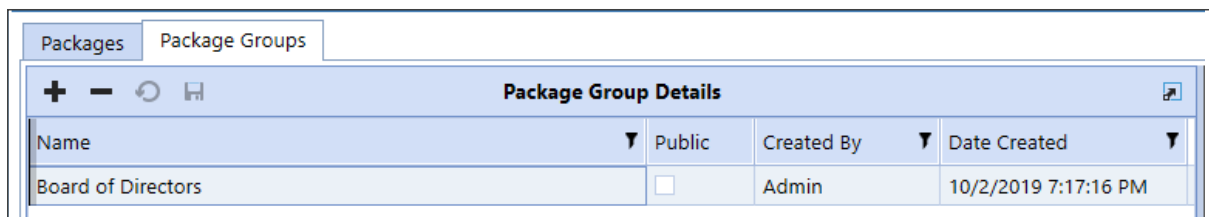
A package group contains packages. Use the Package Group page to:

- Create a package group and add package.
- Copy package groups.
- Distribute packages.

See [Create a Package Group Definition](#) and [Manage Distribution Lists](#)

## Create a Package Group Definition

To create a package group, click  to add a row in the **Package Group Details** grid.



Packages		Package Groups	
<b>Package Group Details</b>			
Name	Public	Created By	Date Created
Board of Directors	<input type="checkbox"/>	Admin	10/2/2019 7:17:16 PM

**Name:** Name of the package group.

**Public (True/False):** Controls the availability of the package group. If selected, the package group is available to all users on the Parcel Service home page and can be managed by users assigned to the Manage Packages Group security role. If cleared, the package group is only available to the user that created the package and the OneStream or Parcel Service Administrators.

**Created By:** Displays the user's name that created the package group. This column is only displayed for OneStream and Parcel Service Administrators.

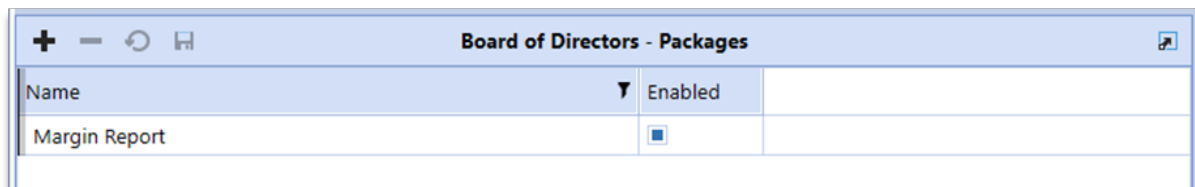
## Package Groups

---

**Date Created:** Displays the date and time the package group was created. This column is only displayed for OneStream and Parcel Service Administrators.

## Packages – Package Group Level

The Packages section lists all the packages included in the package group.



Name	Enabled
Margin Report	<input checked="" type="checkbox"/>

**Name:** Name of the package.

**Enabled (True/False):** Controls whether a package is enabled within a package group. Select to include the package in the package group. Clear to exclude the package.

## Supplied Parameters – Package Group Level

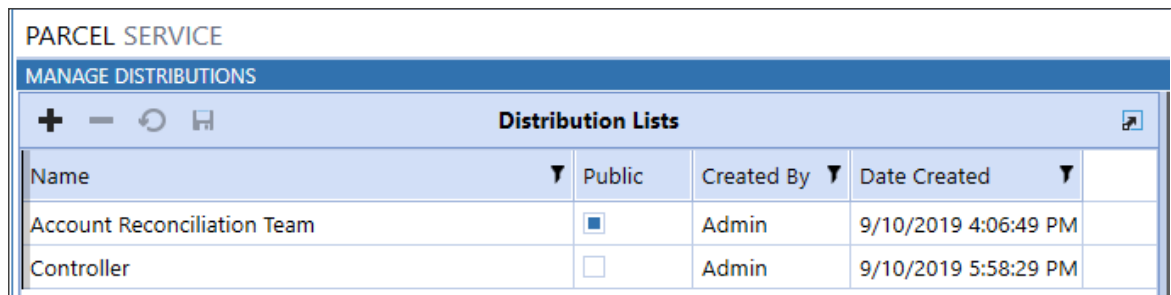
Each extensible document may have parameters that would normally prompt you when you run the file. When running a Parcel Service package group, there is no prompt, so the parameters need to be specified before shipping packages. Supplied parameters are required for the selected extensible document content file and upon processing will cascade through all documents located in the group of packages. This list of parameters defines the values that must be provided to the content file for the file to be executed without user input. These values can be added to the list manually.

**Name:** Enter the name of the parameter.

**Literal Value:** Literal value to use for the named parameter.

# Manage Distribution Lists

Distribution lists contain the email addresses and file share locations you can use to send out packages.



The screenshot shows a web interface for 'PARCEL SERVICE' with a 'MANAGE DISTRIBUTIONS' section. Below this is a 'Distribution Lists' table with columns: Name, Public, Created By, and Date Created. There are two rows of data: 'Account Reconciliation Team' and 'Controller'.

Name	Public	Created By	Date Created
Account Reconciliation Team	<input checked="" type="checkbox"/>	Admin	9/10/2019 4:06:49 PM
Controller	<input type="checkbox"/>	Admin	9/10/2019 5:58:29 PM

You can specify these settings:

- **Name:** Name of the distribution list.
- **Public (True/False):** Select **True** to display the distribution list in the **Package Details** list so users with the Manage Distributions List can make selections. Select **False** to make the list available only to its creator and OneStream or Parcel Service Administrators.
- **Created By:** Displays the user's name that created the distribution list. This column is only displayed for OneStream and Parcel Service Administrators.
- **Date Created:** Displays the date and time the distribution list was created. This column is only displayed for OneStream and Parcel Service Administrators.

## Distribution List - Users

The list of individual users to include in the distribution list.



## Package Groups

---

Account Reconciliation Team - Users		
User	Alternate Email	Enabled
(External User)	sampleuser@onestreamsoftware.com	<input type="checkbox"/>

**User:** Select a user from the drop-down list. These users are included in the distribution list and their email addresses used during shipping.

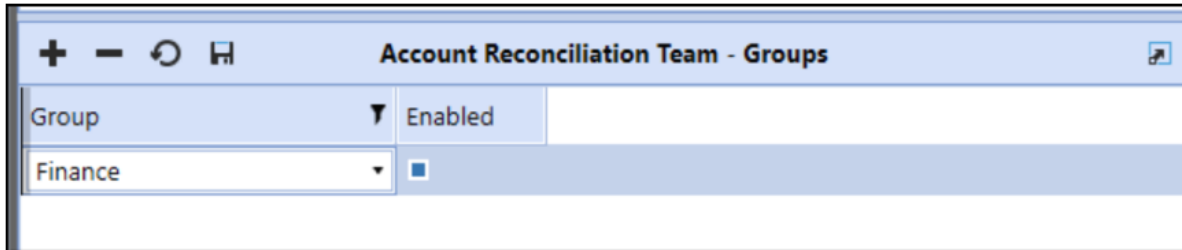
**NOTE:** Select **External User** to enter an alternate email address.

**Alternate Email:** Enter the email address to use instead of the email assigned to the OneStream User ID.

**Enabled:** Select to add a user to the distribution list.

### Distribution List - Groups

The security group members to include in the distribution list.



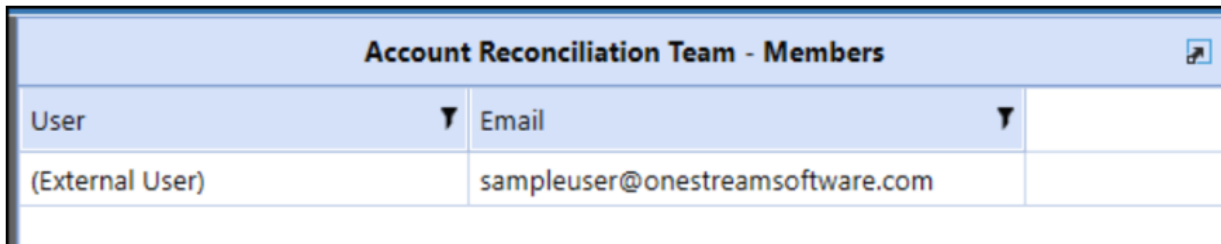
Account Reconciliation Team - Groups	
Group	Enabled
Finance	<input type="checkbox"/>

**Group:** The OneStream Security Group members to include in the distribution list.

**Enabled (True/False):** If selected, the security group is included in the distribution list. If cleared, the group is excluded from the distribution list.

### Distribution List - Members

This section provides a preview of the combined user and group email distribution members for the distribution list. The list represents all individual members and all assigned security group members. You can copy the distribution list.



Account Reconciliation Team - Members	
User	Email
(External User)	sampleuser@onestreamsoftware.com

# Help and Miscellaneous Information



This page contains solution documentation.

## Display Settings

OneStream Platform and Solutions frequently display multiple data elements for data entry and analysis. To best render forms and reports, specify a minimum of 1920 x 1080 as your screen resolution. Also, set your Windows System Display text setting to 100% and do not use custom scaling options.

## Package Contents and Naming Conventions

The package file name contains multiple identifiers that correspond with the platform. Renaming any of the elements contained in a package is discouraged in order to preserve the integrity of the naming conventions.

**Example Package Name:** OPS\_PV7.4.0\_SV100\_PackageContents.zip

Identifier	Description
OPS	Solution ID
PV7.4.0	Minimum Platform version required to run solution
SV100	Solution version
PackageContents	File name

# GetAllLiteralParams

Literal parameters are meant for static values and should not be used to hold values that change on a regular basis. Using a literal parameter in such a manner can cause issues with dashboard processing for users. Use input parameters for values that change regularly.

## Solution Database Migration Advice

A development OneStream application is the safest method for building out a solution with custom tables such as this one. The relationship between OneStream objects such as workflow profiles and custom solution tables is that they point to the underlying identifier numbers and not the object names as seen in the user interface. Prior to the solution configuration and to ensure the identifiers match within the development and production applications, the development application should be a recent copy of the production application. Once the development application is created, install the solution and begin design. The following process below will help migrate the solution tables properly.

**See also:** *Managing a OneStream Environment* in the *Design and Reference Guide*.

# OneStream Solution Modification Considerations

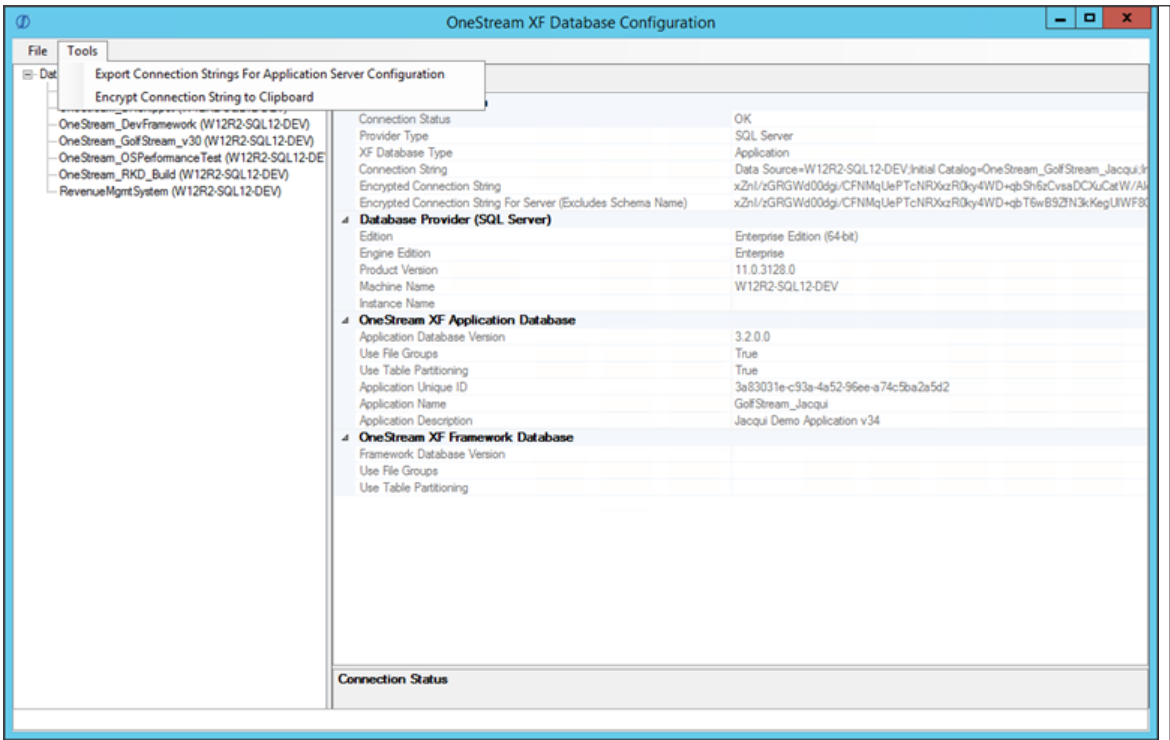
A few cautions and considerations regarding the modification of OneStream Solutions:

- Major changes to business rules or custom tables within a OneStream Solution will not be supported through normal channels as the resulting solution is significantly different from the core solution.
- If changes are made to any dashboard object or business rule, consider renaming it or copying it to a new object first. This is important because if there is an upgrade to the OneStream Solution in the future and the customer applies the upgrade, this will overlay and wipe out the changes. This also applies when updating any of the standard reports and dashboards.
- If modifications are made to a OneStream Solution, upgrading to later versions will be more complex depending on the degree of customization. Simple changes such as changing a logo or colors on a dashboard do not impact upgrades significantly. Making changes to the custom database tables and business rules, which should be avoided, will make an upgrade even more complicated.

# Appendix 1: Encrypt Connection Information

Perform these steps to encrypt the email connection string:

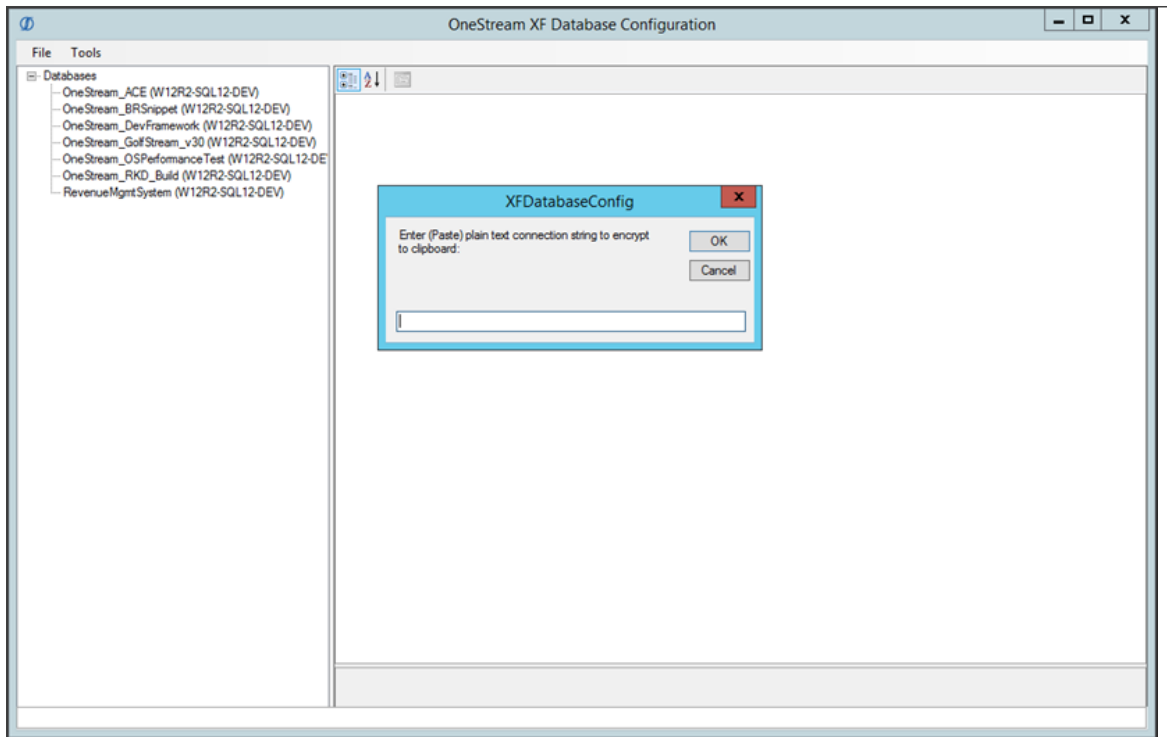
- 1. Open the OneStream Software Database Configuration Utility.



- 2. From **Tools**, select **Encrypt Connection String to Clipboard**.

## Appendix 1: Encrypt Connection Information

---



3. Copy the email connection string into the Configuration Tool and click **OK**.

```
Smtphost=[smtp.office365.com], Smtpport=[587],
```

```
EnableSSL=[True], Smtppassword=[password], Smtppassword=[password]
```

```
Smtppassword=[password]
```

The encrypted string is then stored to the clipboard.

```
XScpcDzo3an7EWAAP6Wvz1IZWE3Q+Fo8DSx0OpacS0Yp5X4sHXti
```

```
QGdAoNmNGU48xOa3xD3C68yAl7B8aXUbv021j4921ErgN2R+E1qlLG2
```

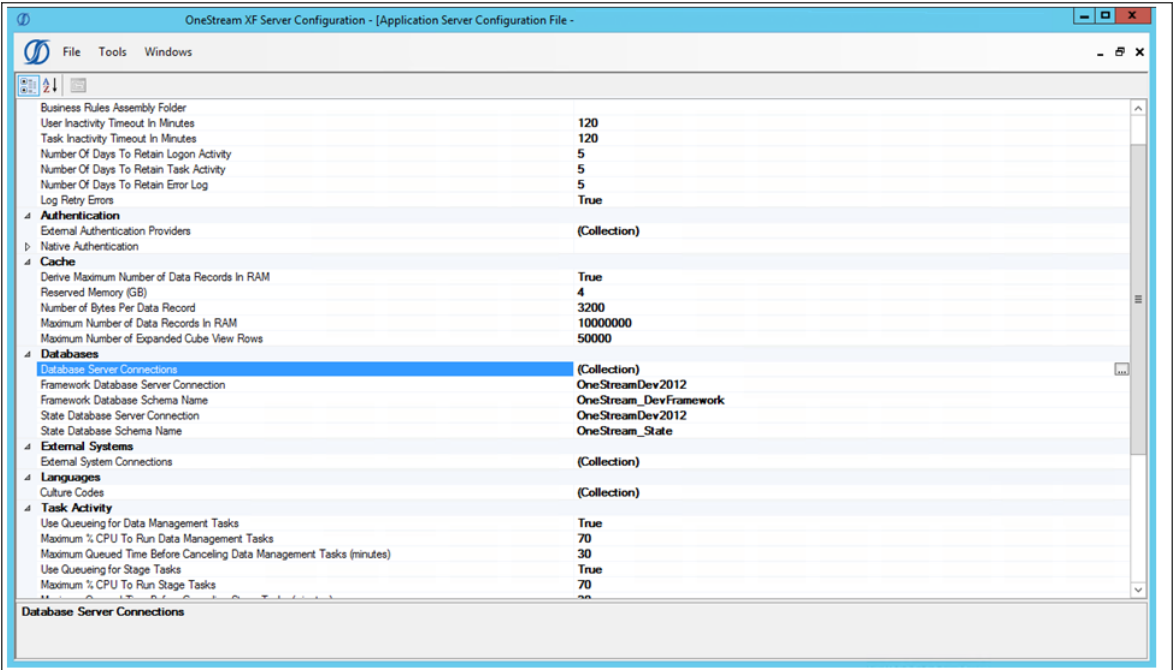
```
4pO8a62X0n/q4PS70xzozL7R9HzKWT0txtfbpJMUPYrIhCDz6Ubd52/
```

# Appendix 1: Encrypt Connection Information

buVABQyUxf2c0Y1BmgIKE//6eOcmCv0D5abX6oKbEmZLlms7vXyuiCD

KaYheBNX/vbtK4=

- 4. Open the OneStream Software Application Server Configuration Tool.




- 5. Open **Database Server Connections**.
- 6. Add a new Database Connection.

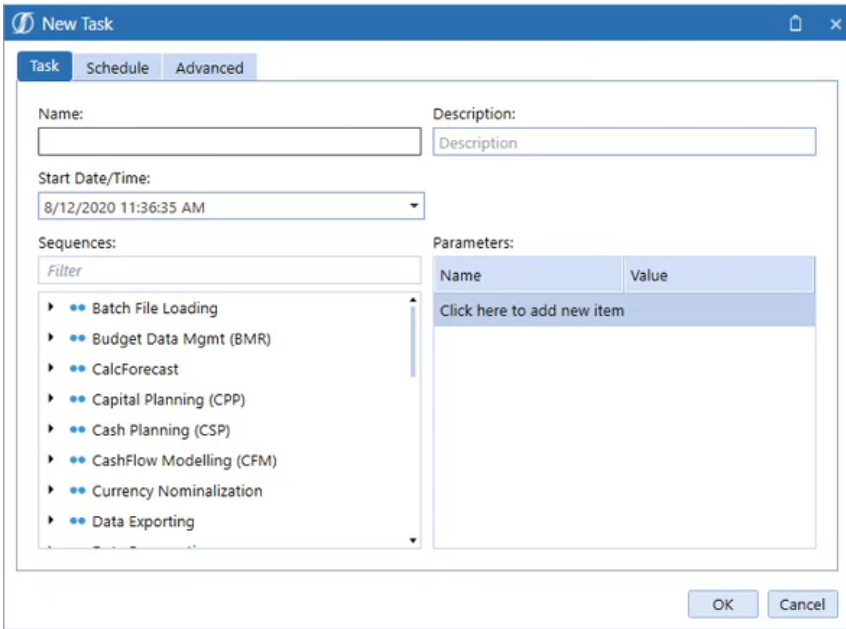


# Appendix 2: Create a Task With Task Scheduler

Document packages or package groups can be shipped on a scheduled basis using the OneStream Task Scheduler. See *Task Scheduler* in the *Design and Reference Guide*.

To create a task:

1. Click Create Scheduled Task . The New Task dialog box opens.



2. Click **Task**.

## Appendix 2: Create a Task With Task Scheduler

---

**New Task**

Task Schedule Advanced

Name: Weekly Export of Trial Balance Description:

Start Date/Time: 8/12/2020 11:36:35 AM

Sequences:

Filter

- Batch File Loading
- Budget Data Mgmt (BMR)
- CalcForecast
- Capital Planning (CPP)
- Cash Planning (CSP)
- CashFlow Modelling (CFM)
- Currency Nominalization
- Data Exporting

Parameters:

Name	Value
Click here to add new item	

OK Cancel

3. Enter the following details:
- a. A task name and description.
  - b. A Start Date/Time that specifies when to run the task. If you do not specify a time, the current date and time are used.
  - c. A data management sequence. Scroll the list or find the sequence by entering the name in **Filter**.

## Appendix 2: Create a Task With Task Scheduler

---

Sequences:

Export Tria

•• Data Exporting

Export Trial Balance

Export Trial Balance2

Parameters:

Name	Value
JGGlobalScenario	BudgetV2
Click here to add new item	

- d. Any parameters assigned to a sequence display. Add and modify parameter settings as needed to ensure parameters are valid so the job will run.

New Task

Task

Schedule

Advanced

Name:

Weekly Export of Trial Balance

Description:

Weekly Export of Trial Balance Wed Th Fri

Start Date/Time:

8/12/2020 11:45:35 AM

Sequences:

Export Tria

•• Data Exporting

Export Trial Balance

Export Trial Balance2

Parameters:

Name	Value
JGGlobalScenario	BudgetV2
Click here to add new item	

OK

Cancel

4. Click **Schedule** and specify these details:

## Appendix 2: Create a Task With Task Scheduler

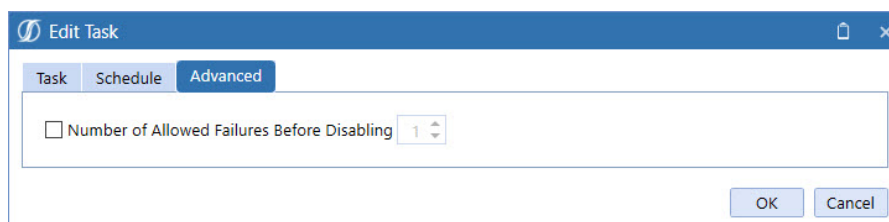
---

- a. Select **One Time** to run the task once given the time specified in **Start/Date Time**.
- b. Select Minutes to recurringly run the task from 5 – 180 minutes. Set tasks to run during predetermined times by typing the start time in **Time From**, then typing when to stop in **To**:

For example, if a task is set to run every 30 minutes, starting at 2:30 pm and ending at 5:30 pm, the task runs first at 2:30 pm, then every 30 minutes until 5:30 pm.

**NOTE:** Calendar entries are created in the Calendar view even if they are outside the selected run time frame.

- c. Daily you can choose how many times it recurs.
  - d. Weekly you can choose how many times it recurs and the days that it runs.
  - e. Monthly you can choose how many times it recurs and the days that it runs.
  - f. Expire Date/Time when and what time it should end.
  - g. Enabled if checked to run.
  - h. Administration Enabled if checked to run.
5. Click **Advanced** to set the number of times to retry a failed task. The maximum is three.



## Appendix 2: Create a Task With Task Scheduler

6. Click **OK** to add the task to the Grid View and the Calendar View.

